

2026–27 WA STATE BUDGET ANALYSIS

Youth Sector and Young People

On 7 May 2026, the Western Australian Government released the **2026-2027 State Budget**, outlining their spending from the previous budget cycle and its plans for the next financial year (from July to June).



This analysis outlines a collective position of the Youth Affairs Council of Western Australia, All It Takes, Consumers of Mental Health WA, CREATE Foundation, Stopping Family Violence, Social Reinvestment WA, Youth Disability Advocacy Network, Youth Educating Peers, Youth Homelessness Advisory Council, and the Youth Pride Network on the 2026-2027 State Budget. The initiatives outlined below are those that will have a significant impact on young people aged 12-25. This list is not exhaustive, however, is designed to show where the biggest impacts will occur.

We commend the WA Government for their investments across wellbeing and inclusive service design outlined in the 2026-2027 State Budget. Funding for various regional initiatives and emergency department alternatives for individuals experiencing suicidal thoughts ensures young people experiencing mental health challenges have access to robust supports. The expanded resourcing of trauma-informed and culturally responsive justice programs and the small uplift in funding across the At Risk Youth Services portfolio established the building blocks for ensuring children engaging or at risk of engaging with the youth justice system are safe and supported in their communities. Additionally, investment in disability supports, LGBTQIA+ services, and multicultural grants programs will help create inclusive communities that celebrate and encourage all young people to thrive. These initiatives marked a promising step towards better outcomes for young people, and we encourage the Government to continue centring their voices and needs in policy design.

Despite these commendable efforts, the Budget does not sufficiently address the systemic barriers and challenges young people are experiencing. While we welcome the funding for youth homelessness, it does not match the scale of crises that children and young people are facing. We urgently need comprehensive investment in a variety of youth-specific homelessness and housing supports, so that all young people have a safe place to call home. Although we praise the Government's significant resourcing of family and domestic violence (FDV) services, we note that this budget is a missed opportunity to expand youth-focused supports that recognise children and young people as impacted by violence in their own right. The Government must commit to investing in youth-specific and youth-led FDV services that recognise the nuanced experiences of children and young people, such as the relationship between experiencing and using violence.

Finally, we acknowledge the Government's commitment to delivering Home Stretch, but note the de-funding of leaving care services will have a critical impact for many young people who do not fit the Home Stretch criteria. Supports for young people leaving care must be expanded and resourced to prevent further crisis, re-traumatisation, and wellbeing detriments. By committing to these targeted investments, the WA Government can improve the outcomes for vulnerable young people across the State.

We remain committed to working with Government and decision-makers to ensure all young people are supported and safe in WA.



CONTENTS

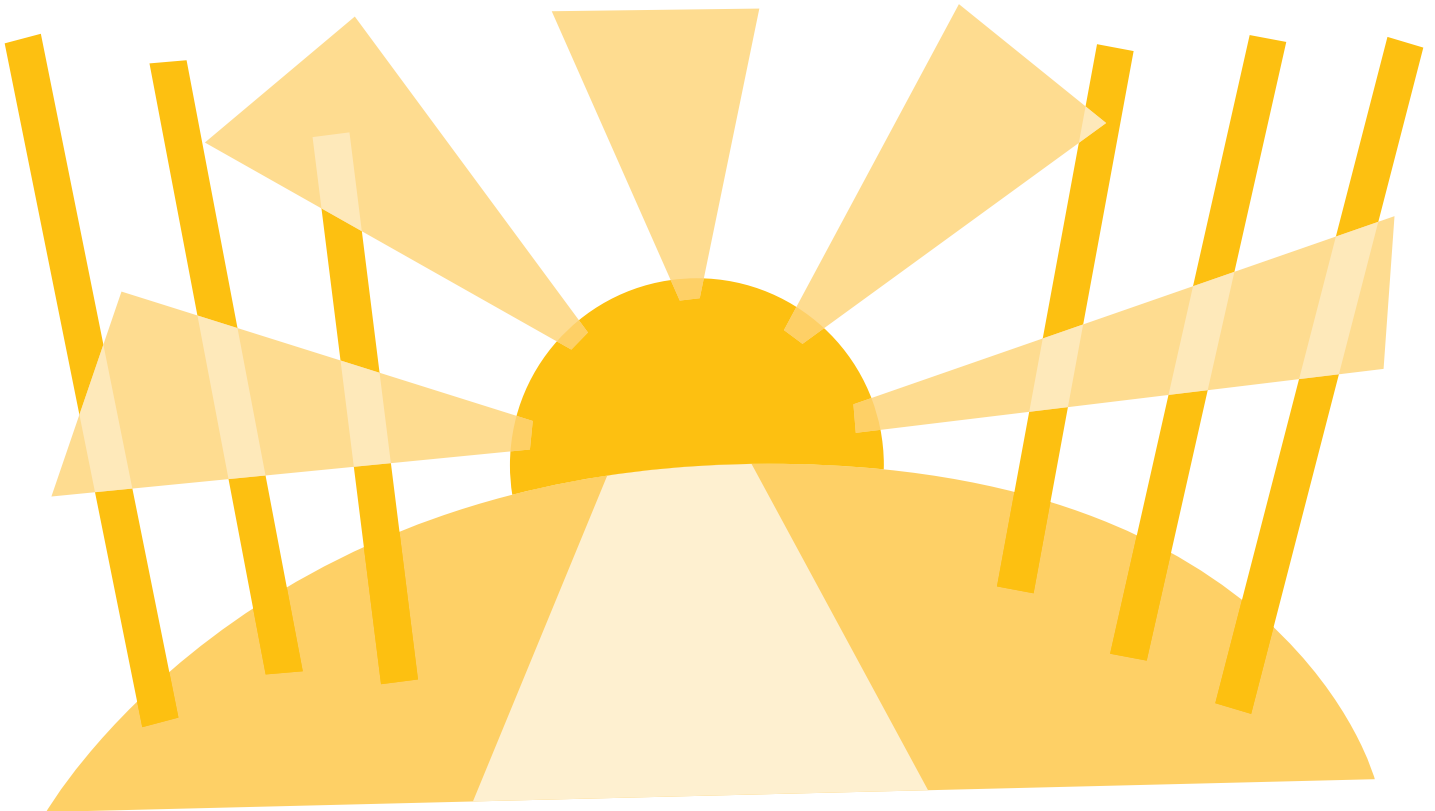
1. Aboriginal Wellbeing	3
2. At Risk Youth	4
3. Cost of Living	5
4. Disabilities	6
5. Education and Training	7
6. Family and Domestic Violence and Sexual Violence	8
7. Housing and Homelessness	9
8. LGBTQIA+ Young People	10
9. Mental and Physical Health	11
10. Multicultural Young People	12
11. Out of Home Care	13
12. Regional, Rural and Remote Communities	14
13. Youth Justice	15



INITIATIVE	INVESTMENT 26-27; FORWARD ESTIMATES (FE)	DESCRIPTION	IMPLICATIONS
Aboriginal Family-Led Decision-Making	\$1,762,000; \$7,178,000 over the next 4 years	Supporting the ongoing delivery of Aboriginal Family-Led Decision Making (AFLDM) services in the Midwest Gascoyne and Mirrabooka, facilitating culturally appropriate and inclusive decision-making forums where families play a central role in their childrens' care. AFLDM respects the cultural knowledge, perspectives, and strengths of Aboriginal families, enabling them to make informed decisions regarding their children's well-being.	These initiatives will help ensure that Aboriginal children and families in the child protection system will continue to receive culturally appropriate supports and service. However, we urge the government to prioritise the expansion of this program to align with the national prioritisation of the AFLDM services to meet Closing the Gap Target 12.
Aboriginal Representative Organisations	\$6,591,000; \$37,719,000 over the next 4 years	Expansions of Aboriginal Representative Organisations (AROs) to ensure Aboriginal children in care maintain strong connections to family, culture, and Country. They are consulted before the placement of Aboriginal children in out-of-home care and participate in preparing and reviewing Cultural Support Plans (CSPs), which guide the maintenance of a child's cultural identity while in care.	In recent years, WA has consistently reported having the highest proportion of Aboriginal and Torres Strait Islander children and young people in care and is not on track to meet Closing the Gap Target 12. The expansion of AROs throughout the State will be vital in ensuring the successful implementation of WA's Out of Home Care reform, which prioritises a system that is Aboriginal-led and flexible to each family's needs. This approach will limit the separation of sibling groups, increase pathways for reunification, and ease young people's transition out of care.
Child Sexual Abuse Therapeutic Services and Indigenous Healing Services Commissioning	\$4,042,000; \$17,222,000 over the next 4 years	Provide a range of healing, support, counselling, and therapeutic responses for children and young people impacted by child sexual abuse.	Progressing Child Sexual Abuse Therapeutic Services and Indigenous Healing Services Commissioning will work towards ensuring young people who have been affected by child sexual abuse have access to timely and culturally relevant therapeutic services. A large investment such as this is promising. The implementation of these services will allow young people and their communities to heal and limit the severity of long-term impacts.
Kimberley Schools Project	\$6,500,000; \$10,500,000 over the next 4 years	To continue support for students and schools across the Kimberley, with a focus on community partnership and empowerment, the Government's investment will ensure the continuation of the Kimberley Development Commission and the Kimberley Schools Project (including the Kindilink program) until the end of 2027.	Investment into the project is welcomed, providing the necessary funding to strengthen existing approaches to education and learning. This evidence-based program has proven effective in improving school outcomes for children and young people.
Martu Student Hostel Program	\$1,500,000; \$5,816,000 over the next 4 years	The Martu Student Hostel (officially named Martuku Jijiku Maya) is a residential facility in Newman, Western Australia, designed for Martu secondary students from remote Western Desert communities. It allows youth to access secondary education and training while staying connected to their families, culture, and Country.	The continued investment in the program is greatly welcomed, helping kids from Martu communities to access secondary education and training.
Pilbara Safe Spaces - Communities Indigenous Healing Services	\$1,400,000; \$5,709,000 over the next 4 years	The Pilbara Safe Spaces program will offer a temporary safe space and/or transport home for children and young people at risk and on the streets at night.	We commend the government for prioritising early intervention and prevention with their investment. The culturally responsive supports provided by Pilbara Safe Spaces ensure young people are safe and supported in their communities.



INITIATIVE	INVESTMENT	DESCRIPTION	IMPLICATIONS
<p>Funding Boost for At-Risk Youth Services</p>	<p>\$5,752,000; \$20,348,000 over the next 4 years</p>	<p>\$20,348,000 towards various services and support programs for at-risk young people, including:</p> <ul style="list-style-type: none"> • \$469,000 to City of Kwinana Arclight Initiative, working with 12-14 year olds across various workshops and skill building activities; • \$301,000 to the Kimberley Empowered Youth Network to support Empowered Young Leaders to sustain a network of young Aboriginal leaders across the Kimberley; • \$3,200,000 to Kununurra Night Patrol and Youth Service and Broome Night Patrol to provide transportation services and a safe place at night for children and young people aged 12-18; • \$7,653,000 for services for young people at risk; • \$7,322,000 to the Home Safe program, supporting unsupervised children in Northbridge; and, • \$1,383,000 towards youth counselling 	<p>We're pleased to see state government investment in this successful and evidence-based initiative, working to keep kids out of the justice system. The continued investment demonstrates recognition of the importance of early intervention and culturally safe diversionary responses for young people at risk of contact with the justice system.</p> <p>The funding supports community-based initiatives that not only respond to immediate safety concerns, but also contribute to reducing offending and alcohol and drug misuse while strengthening cultural and community connection for vulnerable Aboriginal young people.</p> <p>However, we are concerned that the level of investment into services for young people at risk is not adequate to provide support to young people at risk across WA.</p>



Cost of Living



INITIATIVE	INVESTMENT 26-27;FE	DESCRIPTION	IMPLICATIONS
Free Public Transport	\$70,100,000 over the next year	Free public transport on Sundays and for students travelling to and from school.	We welcome the Government's efforts to relieve the cost of living pressures on children and families. However, we urge the government to expand this initiative to ensure all children and young people, regardless of educational enrolment, have access to free public transport.
KidSport Program	\$5,528,000 over the next year	The Government continues to provide children from low-income families with financial assistance to participate in community sport through the KidSport program, with vouchers of \$300 per eligible child in 2026/27.	We are pleased with the Government's investment, as the assistance provided through the KidSport Program enables young people doing it tough to participate in community sports programs. We hope this investment is matched with further initiatives prioritising young people's health and wellbeing.
Fuel Support Payment	\$10,000,000 over the next year	To offset the increase in fuel prices, the Government will administer \$100 Fuel Support Payments to driver's licence holders.	This initiative will help relieve short-term financial burdens for eligible young people, however we urge the Government to expand their cost-of-living relief to include more targeted, long-term supports for young people and their communities.





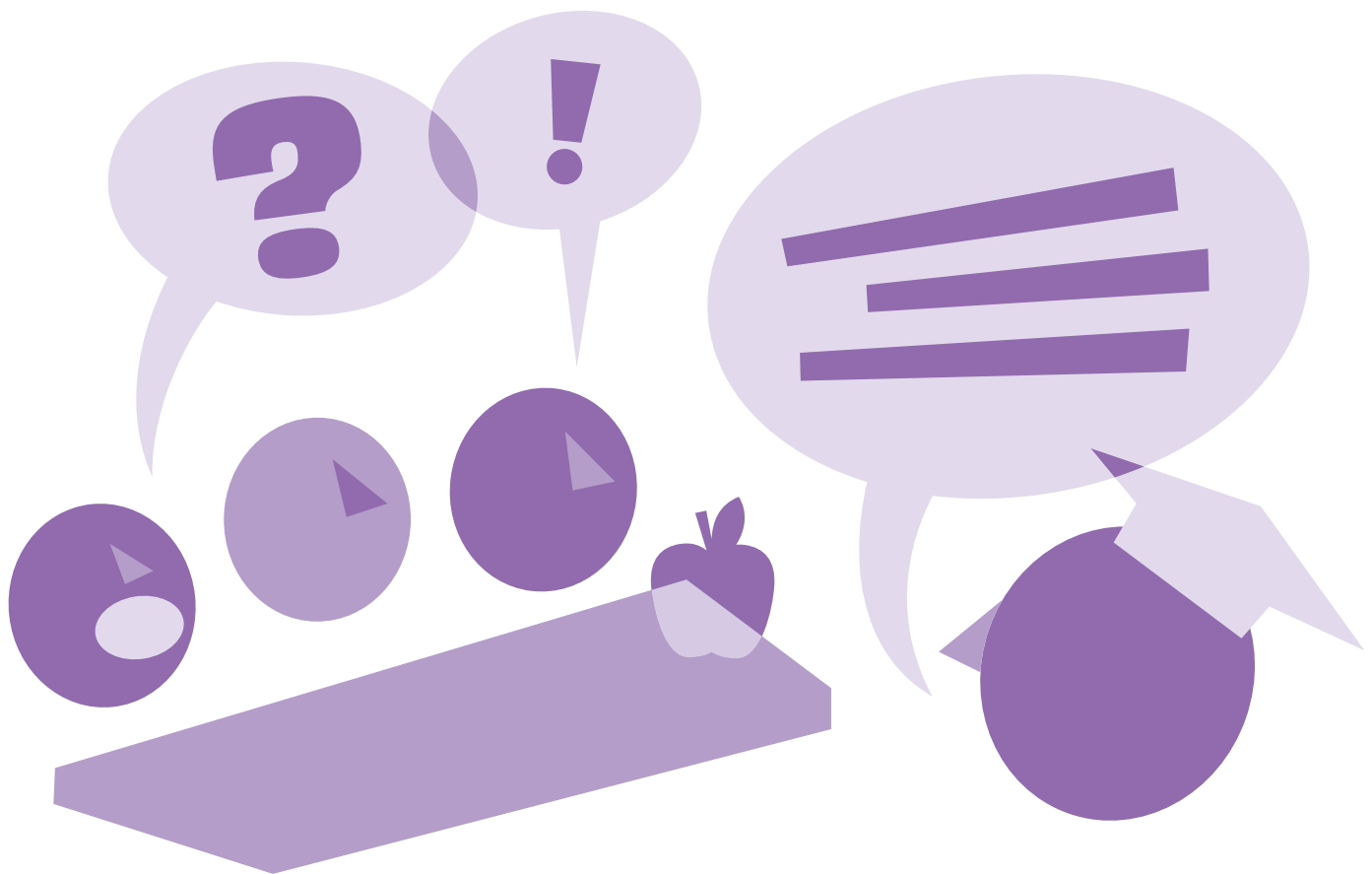
INITIATIVE	INVESTMENT 26-27;FE	DESCRIPTION	IMPLICATIONS
Disability Advocacy and Referral Diversion for Young People - Legal Aid	\$481,000; \$1,993,000 over 4 years	DARDY works in partnership with State-wide agencies and young people under 25 who may be experiencing difficulties due to disability to develop positive pathways to necessary supports. DARDY aims to improve outcomes and to create better, stronger futures.	Young people with disability are significantly overrepresented in our justice system. We welcome ongoing funding for the DARDY Project, which supports young people to navigate the legal system and access therapeutic, community-based supports. We encourage the government to work with young people with disabilities to improve the program's accessibility and streamline referral pathways.
Disability and Inclusion Professional Learning Hub	\$4,520,000; \$15,701,000 over 4 years	The Government is strengthening support for students with disability, teachers and schools through the establishment of the Hub, which will bolster access to resources, professional learning and supports for education staff. This investment will improve teacher capability in inclusive education, likely enhancing learning outcomes, engagement, and school participation for students with disability.	We welcome this investment, having the potential to reduce the disparities in educational experiences and outcomes for young people with a disability by promoting consistency in inclusive practices across schools. However, we urge the government to work alongside young people with disabilities and educators to ensure consistent training for all levels of teaching staff and reduce burnout for educators.
Employment of People with Disability Procurement Policy	\$687,000; \$2,834,000 over the next 4 years	The development and administration of the Employment of People with Disability Procurement Policy seeks to provide employment opportunities to people with disability through government procurement. Agencies and suppliers will need to build capability in inclusive recruitment, workplace adjustments, and retention practices.	We commend the Government for its investment, as it is expected to increase employment pathways for people with disability through direct and indirect government contracting opportunities. This will improve the social participation, financial independence, and wellbeing outcomes for young people with disability, and enhance the State's commitment to inclusion, equity, and human rights.



Education and Training



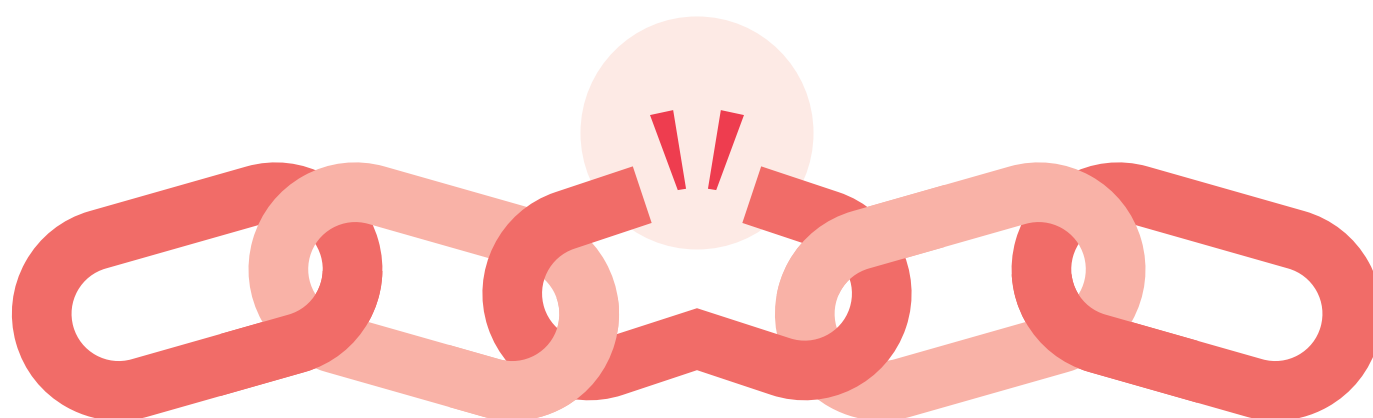
INITIATIVE	INVESTMENT 26-27;FE	DESCRIPTION	IMPLICATIONS
Schools Clean Energy Technology Fund	\$2,401,000; \$5,401,000 over the next 2 years	The fund provides STEM learning opportunities for students and teachers.	We are pleased with the Government's investment to provide students with new skills and to help them understand the benefits of renewable energy and technologies.
West Australian Certificate of Education Access: Expanding Pathways for Priority Cohort	\$2,481,000; \$6,900,000 over the next 4 years	Development of an additional WACE pathway to support up to 3,000 Year 12 students by 2031 who are currently unable to access the existing certification pathway, ensuring inclusive and meaningful learning outcomes. Priority cohorts are determined by schools' ability to provide existing alternative pathways, such as Cert IIs.	We are very pleased with the expansion of available WACE pathways by targeting under resourced schools, and welcome the Government's efforts to ensure all children and young people have access to the necessary educational supports to thrive.
Western Australian Student Assistance Payment	\$5,715,000 over the next year	One off cost of living payment for families of primary and high school students. \$150 for each primary and \$250 for each high school student.	We are pleased with the continuation of the Student Assistance Payments, however, we encourage further investment into cost-of-living measures that prioritise young people as individuals rather than just members of family units.



Family and Domestic Violence and Sexual Violence



INITIATIVE	INVESTMENT 26-27;FE	DESCRIPTION	IMPLICATIONS
Coercive Control Education and First Responder Training	\$500,000; \$2,000,000 over the next 4 years	Funds specialised training for frontline workers responding to family and intimate partner violence in the justice system. This training provides readiness for addressing criminalised coercive control.	We support expanded education and responses to coercive control as it assists in accurately identifying and responding to coercive control. We encourage the Government to expand this initiative to other community and emergency service workers, and to develop specialised training to address the unique experiences of children and young people.
Family and Domestic Violence Response Team	\$7,642,000; \$31,972,000 over the next 4 years	Family and Domestic Violence Response Teams (FDVRTs) help with coordinating a State-wide response by improving risk-assessment, risk-management, and information sharing.	We are pleased with the Government's significant investment, enabling the Teams to continue their work in implementing the targets outlined in the Family and Domestic Violence Systems Reforms Plan.
Multi-agency Investigation and Support Team - Parkerville	\$2,100,000 over the next year	Sexual abuse support for children and young people across Armadale, Midland, and Rockingham. The Multi-agency Investigation and Support Team (MIST) operate from purpose-built facilities for children and young people, and include cross-agency support from WA Police, Child Abuse Squad Investigating Officers, WAPOL Child Abuse Squad Specialist Child Interviewers, Child and Family Advocates, and comprehensive mental health teams.	We welcome the continued funding of the MIST program, providing essential support to children and young people impacted by child sexual abuse.
Primary Prevention Grants	\$3,000,000; \$12,000,000 over the next 4 years	Grants provided to various organisations to provide primary prevention education and programs across WA. Is very broad, having the potential to deliver youth and non-youth specific initiatives, and address both potential victim/survivors and potential perpetrators.	We are pleased with the significant investment into primary prevention, and look forward to working with the Government to ensure these grants deliver targeted initiatives for children and young people.



Housing and Homelessness



INITIATIVE	INVESTMENT 26-27;FE	DESCRIPTION	IMPLICATIONS
Indigo Junction	\$4,168,000; \$17,163,000 over the next 4 years	Expansion to support operations of this youth homelessness accommodation facility. This facility will support the delivery of Indigo Junction's Housing First for Youth service.	We commend the Government on their investment into Housing First for Youth, however, the budget does not adequately address the urgency of the youth homelessness crisis. It is essential that the government resources a comprehensive youth homelessness service system, and invests in young people with lived experience. We encourage the Government to work alongside young people with lived experience and service providers to ensure implementation aligns with Housing First for Youth principles.
Youth Homelessness – In-Reach Supported Accommodation	\$717,000; \$3,100,000 over the next 4 years	Expansion of an in-reach supported youth accommodation service at Perth Inner City Youth Services for young people aged 12 to 25, prioritising young people from the LGBTIQ+ community.	We commend this targeted investment which will enable a better response to the overrepresentation of LGBTIQ+ young people experiencing homelessness. We urge the Government to work alongside young people with lived experience and service providers to continue expanding on this initiative.
Homelessness Accommodation Services Uplift	\$3,717,000; \$27,786,000 over the next 4 years	Support the recommissioning of homelessness services across the State to increase service capacity.	We commend the investment to improve the capacity of support services, and hope the recommissioning process reflects the demand and support needs of children and young people.



LGBTQIA+ Young People



INITIATIVE	INVESTMENT 26-27;FE	DESCRIPTION	IMPLICATIONS
Extended funding for LGBTQIA+ Peak Body and Sector Organisations	\$440,000; \$3,079,000 over the next 3 years	Investment into LGBTQIA+ peak bodies and a variety of LGBTQIA+ organisations. Includes a \$660,000 service agreement with the Youth Pride Network (YPN) and funding for programs that align with and support the delivery of WA's first whole-of-government LGBTQIA+ Inclusion Strategy and Action Plan.	We are extremely pleased with the sustainable funding for the variety of LGBTQIA+ advocacy services funded, particularly the continued funding of YPN.
LGBTQIA+ Training	\$800,000 over the next year	Funding for training aligned with the goals of the LGBTQIA+ Inclusion Strategy- funding through the Australian Medical Association for medical practitioners to receive training to deliver LGBTQIA+ safe care.	Training for medical professionals is a very positive outcome for both the practitioners and patients, and we would like to see further clarification on the specifics of the investment.



Mental and Physical Health



INITIATIVE	INVESTMENT 26-27;FE	DESCRIPTION	IMPLICATIONS
Children and Young People Responsive Suicide Support Program	\$4,900,000 over 4 years	Funding to expand the Children and Young People Responsive Suicide Support Program into the South West.	Children and young people in the South West will now have access to individual, group or family counselling supports to children and young people who have lost someone to suicide. We welcome this initiative.
Hospitals, Health Centres and Community Facilities - Child and Adolescent Mental Health Services Bentley Community Clinic	\$696,000; \$2,784,000 over the next 4 years	This will likely fund the re-opening of the CAMHS Bentley community clinic. Bentley Family Clinic was closed in 2025 and a commitment to reopen a clinic in the Bentley catchment area was made by Minister Hammat.	We welcome the potential investment into the Bentley Family Clinic, allowing young people from the area to access mental health supports.
ICA System Transformation	\$6,048,000; \$26,200,000 over the next 4 years	Further funding to progress various initiatives under the Infant, Child, and Adolescent System Transformation Program, including: <ul style="list-style-type: none"> • \$16,000,000 for the Community Infant, Child and Adolescent Mental Health Services (ICAMHS) Hub located in Bunbury, providing specialised mental health support for young people and their families; • \$8,800,000 million for telehealth-based mental health support for children living in rural and remote areas who are experiencing a mental health crisis; and • \$1,400,000 million for the Mother Baby Nurture program, a 10-week perinatal support group for mothers and their infants. 	We are pleased with the continued investment into the Infant, Child, and Adolescent Mental Health System Transformation Project aims, offering more mental health support for children, young people and their families in regional and remote areas.
Step Up/Step Down Facility - Metropolitan Youth	\$4,539,000 over the next year	Finishing up the establishment of the Metro Youth Step Up/Step Down Facility, providing up to 10 beds for people aged 16-24 years across WA. The service provides care for people recovering from mental illness in a residential facility in the community.	We commend the investment into the provision of short-term care and treatment to help young people manage changes in their mental health and reintegrate into the community after discharge from hospital.
Youth Suicide Sanctuary (Luminos)	\$7,200,000 over the next year	Funding enables the continuation of Luminos, providing short-term residential and therapeutic support for people aged 16 to 24 years experiencing suicidal thoughts, as an alternative to presenting to an emergency department.	We are pleased with the continuation of Luminos, as it is a crucial alternative to presenting to an emergency department for young people experiencing suicidal thoughts.

Multicultural Young People



INITIATIVE	INVESTMENT 26-27;FE	DESCRIPTION	IMPLICATIONS
Community Grants Program	\$1,250,000; \$5,000,000 over the next 4 years	This program, run by the Office of Multicultural Interests (OMI), supports community-led activities that celebrate and promote WA's cultural diversity. These grants help build individuals', families', and communities' capacity to contribute to WA's economy. They help to improve the accessibility and effectiveness of services.	We commend the Government's investment into community-led initiatives for culturally and linguistically diverse people. We hope to see targeted investments from this initiative to specifically support multicultural young people.
Community Languages Program	\$2,407,000; \$9,727,000 over the next 4 years	The OMI provides support to eligible not-for-profit community organisations to teach languages other than English for students from Kindergarten to Year 12 out of school hours. The Community Languages Programs supports the community language sector in Western Australia by providing access to grants, resources, and infrastructure to support language learning in schools.	We welcome the investment into the Community Languages Program, as it encourages people of English-speaking background to learn different languages, therefore potentially increasing diverse cultural knowledge among young people.
Target 120 - CaLD	\$972,000; \$2,099,000 over 2 years	Target 120 – CaLD is a new early intervention initiative, specifically targeted at young people from Culturally and Linguistically (CaLD) backgrounds.	This is a welcomed investment to expand the remit of Target 120. We hope that it is delivered in a culturally sensitive way, with co-design by those impacted by the program. We would like to see this funding continued to allow the pilot time to make an impact.





INITIATIVE	INVESTMENT 26-27;FE	DESCRIPTION	IMPLICATIONS
Children in Care Class Action	\$1,930,000; \$3,944,000 over next 2 years	Australian Human Rights Council investigated racial discrimination as a factor in the unjust removal of Aboriginal and Torres Strait Islander children from their families by Western Australia's Department of Communities. Complaints additionally made regarding delayed or lack of reunification processes for Aboriginal and Torres Strait Islander families.	It is disappointing to see the short investment period allocated to this class action considering Western Australia currently has the highest proportion of Aboriginal and Torres Strait Islander children and young people in care. Placing greater priority on addressing the class action will benefit young people who have recently left care and will contribute to ending the cycle of care for Aboriginal and Torres Strait Islander families in Western Australia.
Home Stretch WA	\$7,761,000; \$29,525,000 over the next 4 years	Home Stretch WA provides support for children and young people leaving care up until the age of 21. Children and young people between the ages of 15 – 17.5 and 21-25 are not eligible for Home Stretch supports. There is a need for greater access to Home Stretch services throughout WA.	<p>We urge the government to invest greater into the facilitation of Home Stretch throughout the state. There is currently very limited access to Home Stretch in regional and remote areas, further exacerbating the isolation and lack of resourcing available for young people transitioning out of care in these areas. Combined with the reallocation of leaving care support services in regional and remote areas, there is a significant gap in access to transitional support.</p> <p>Without adequate support during the transition out of care, young people are less likely to maintain stable housing, participate in tertiary education and the workforces, and their physical and psychological wellbeing will suffer.</p>
Indian Ocean Territories Service Delivery Agreement	\$239,000; \$956,000 over the next 4 years	This partnership ensures that residents of Christmas Island and Cocos (Keeling) Islands have access to child protection services to the same standard as those in mainland Australia.	This is a welcome investment that enables young people to be better supported during their transition out of care.
Out of Home Care	\$109,754; \$358,705,000 over the next 3 years	Out-of-home care (OoHC) services for children and young people who have been removed by child protection services. There has recently been shifts in funding allocated for OoHC, specifically for leaving care support services throughout the state.	<p>Clarity regarding the allocation of OoHC funding is needed. The reallocation of funding for leaving care supports has been deeply concerning for young people and service providers, providing stability at a critical life stage that recognises the importance of supporting young people well into their early twenties.</p> <p>Without adequate transition supports, young people are more likely to experience further disadvantage, including engagement with homelessness services, health systems, and the justice system. We strongly advocate for the continuation and strengthening of transition from care supports to ensure that all young people leaving care are given a fair opportunity to build stable, connected, and successful adult lives.</p>

Regional, Rural and Remote Communities



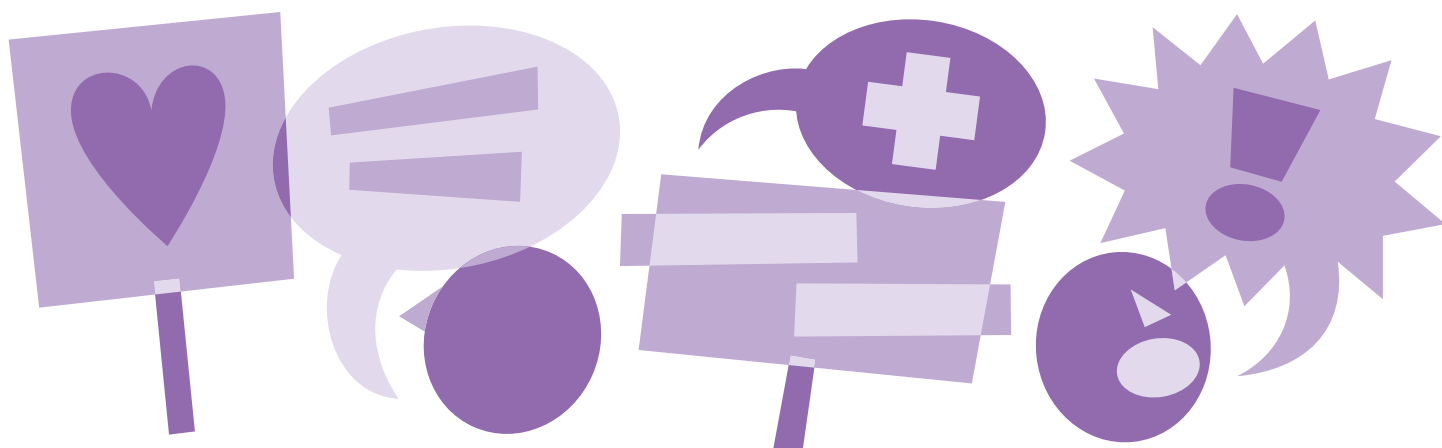
INITIATIVE	INVESTMENT 26-27;FE	DESCRIPTION	IMPLICATIONS
Child Development Services System Reform Program	\$24,500,000; 49,831,000 over the next 4 years	Continuation of the uplifted workforce, including pediatricians, nurses, and allied health, to reduce the hospital wait times for children and young people.	A welcomed investment into increasing the workforce capacity supporting children and young people.
Kimberley Juvenile Justice Strategy	\$10,193,000; \$41,000,000 over the next 4 years	A WA Government program to support community-led, place-based initiatives across the Kimberley that improve Aboriginal youth wellbeing and community safety and address the overrepresentation of Aboriginal young people in the justice system. Includes funding for Young and Deadly Futures Alternative Learning Program.	Continued investments in the Kimberly Juvenile Justice Strategy demonstrate recognition of the importance of place-based, culturally informed, preventative approaches to addressing the overrepresentation of Aboriginal young people in the justice system.
Police and Community Youth Centres safeSPACE	\$1,500,000 over the next year	Continuation of Police Community and Youth Centres (PCYC) safeSPACE programs in Kalgoorlie, Kununurra, and Roebourne.	We welcome the Government's investment into community spaces and youth services for young people living in regional and remote communities.





INITIATIVE	INVESTMENT 26-27;FE	DESCRIPTION	IMPLICATIONS
Dandjoo Bidi-Ak Protection and Care Therapeutic Court	\$533,000; \$3,900,000 over the next 4 years	Danjoo Bidi-Ak is a specialist court in the Children's Court of WA, providing therapeutic, culturally informed pathways for Aboriginal children and their families.	We welcome ongoing funding for Danjoo Bidi-Ak, and culturally informed courts which increase engagement and understanding of court processes and support therapeutic responses.
Early Resolution in the Children's Court	\$833,000; \$6,175,000 over the next 4 years	The Office of the Director of Public Prosecutions will maintain focus on early resolution initiatives in the Children's Court to provide meaningful and timely outcomes across the juvenile justice system through effective stakeholder collaboration with key participants in the criminal justice sector.	This will allow for a reduction in the amount of time children spend waiting for their time in court, and therefore reduce the length of justice system engagement. This is better for everyone, provided it doesn't impede on due process, procedural fairness, and access to adequate support. Faster resolutions are more developmentally appropriate for children, and have the potential to reduce time children spent in custody by reducing remand times.
In-Roads Therapeutic Court Program	\$1,545,000; \$3,475,000 over the next 2 years	In-Roads is a therapeutic court of the Children's Court of WA providing an alternative to detention for young people who have pled guilty to criminal charges, aiming to address underlying causes of offending and prevent reoffending.	Ongoing funding for In-Roads is welcome, as it is an excellent example of a needs-based justice response. It has a particular focus on children aged 10 -14 years, and aims to keep them out of youth detention.
New Youth Detention Centre	\$72,938,000; \$158,500,000 over the next 4 years	The Government will invest a total of \$158.5 million, including \$72.9 million in 2026/27, to deliver a new high-security purpose-built youth detention centre to provide therapeutic care and intervention for young people with highly complex needs. Banksia Hill is under capacity and Unit 18 is currently unoccupied at the time of writing, this indicates the lack of need for the new facility.	We are concerned that the investments towards early intervention, prevention, and diversion are overshadowed by the investment towards the new youth detention facility investment. With completion not expected until at least 2028, the project also risks delaying the immediate closure of Unit 18, which the Government has indicated will remain operational until the new facility is built.
Target 120 Programs	\$13,471; \$65,343,000 over the next 4 years	Target 120 is an early intervention program for young people at risk of repeat offending and engagement with the justice system. This funding extends delivery of Target 120 (including post-program transition) for another 4 years.	Ongoing funding for Target 120 is welcome, given it was missing from last year's forwards estimates. This initiative plays an important role in WA justice system, and is a key focus of government's early intervention & diversion. We look forwards to the public release of a recently completed evaluation of this initiative, to learn more about its impact.
Youth Bail Services for Armadale	\$3,829,000 over the next year	Expanded support for young people facing the criminal justice system aimed at reducing rates of re-offending. Investing will provide holistic, wraparound support for young people through assistance with transport, accommodation, education and training, referrals to health, welfare and justice-related programs.	Holistic, therapeutic support for young people on bail is an important aspect of rehabilitation-focused justice. We welcome this ongoing funding, however, would like to see it continued beyond the next two years.
Youth Detention – Therapeutic Model of Care	\$5,165,000; \$20,946,000 over the next 4 years	In 2023, the Model of Care was introduced in youth detention to ensure a therapeutic, trauma informed, culturally-safe, coordinated, and holistic approach to supporting young people - from their first time in detention through to their successful reintegration into the community upon release.	Ongoing and increasing investment in the Model of Care in Youth Detention is critical to improving conditions and meeting the needs of incredibly at-risk children and young people. Investments and focus in this areas to date have been instrumental to ending the crisis within youth detention.

We remain committed to working with the Government to ensure all young people in WA are respected, valued, and enabled to shape the world they live in.



The Youth Affairs Council of Western Australia acknowledges Aboriginal and Torres Strait Islander peoples as the traditional custodians of the lands, waterways and plains on which we live, work and play on. We extend our respect to Elders, both from the past and those who guide us today, and we embrace this connection with all young Aboriginal and Torres Strait Islander people who we work alongside of.

This land has always been, and will always be, Aboriginal land.

yacwa

PHONE (08) 9227 5440
EMAIL yacwa@yacwa.org.au

ADDRESS Level 5, 200 Adelaide Terrace, East Perth WA 6004
POSTAL PO Box 6398, East Perth WA 6892

